

State of Wyoming Corner Record

(In compliance with the *CORNER PERPETUATION AND FILING ACT*, Wyoming Statutes, 1997, Section 33-29-140, et seq., and the Rules and Regulations of the Board of Registration for Professional Engineers and Professional Land Surveyors)

Reverse side of this form may be used if more space is needed.

Record of original survey and citation of source of historical information (if corner is lost or obliterated). Description of corner monumentation evidence found and/or monument and accessories established to perpetuate the location of this corner. Sketch of relative location of monument, accessories, and reference points with course and distance to adjacent corner(s) (if determined in this survey). Method and rationale for reestablishment of lost or obliterated corner.

Quarter Corner: 22/27 T16N, R66W, 6th PM, Laramie County, Wyoming

GLO record: 13"x10"x6" Granite boulder

Found: Well set and marked stone showing "4", the top of the stone broken away and not found.

Set: 30" No.5 rebar w/2 1/2" dia. Aluminum Survey Cap, PLS 4828; with ring of stones.



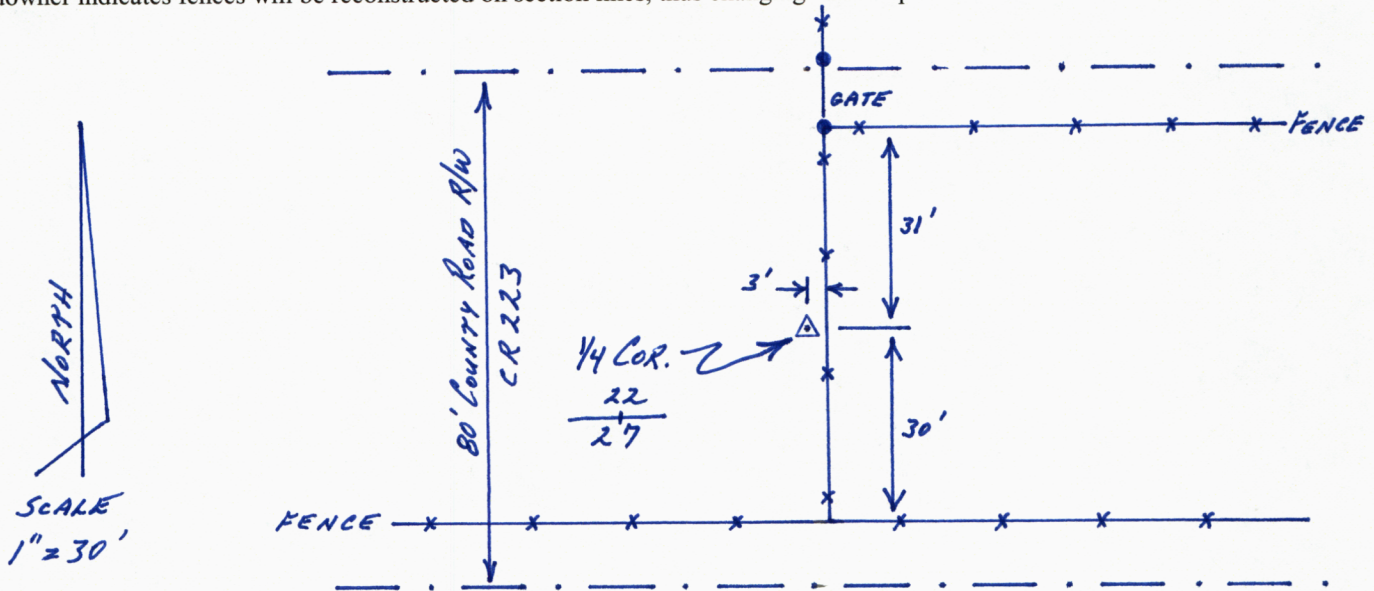
Looking easterly, showing County Road 223 R/W fence.



Found stone, set monument & ring of stones.

NOTE: County Road 223 (originally CR 135) established 31 Dec.1923, Journal page J-6 with an 80' R/W.

NOTE: Landowner indicates fences will be reconstructed on section lines, thus changing relative positions as shown hereon.



Date of Field Work: 18 Aug 2007

Office Reference: _____

CROSS INDEX DIAGRAM

	1	2	3	4	5	6	7	8	9	10	11	12	13	14	15	16	17	18	19	20	21	22	23	24	25
A																									
B																									
C		6		5		4		3		2		1													
D																									
E																									
F																									
G			7		8		9		10		11		12												
H																									
J																									
K																									
L			18		17		16		15		14		13												
M																									
N																									
O																									
P																									
Q																									
R																									
S																									
T																									
U																									
V																									
W																									
X																									
Y																									
Z																									

Land Surveyor / Firm / Address

Studley Land Surveying, PC

John J. Studley, PLS No. 4828

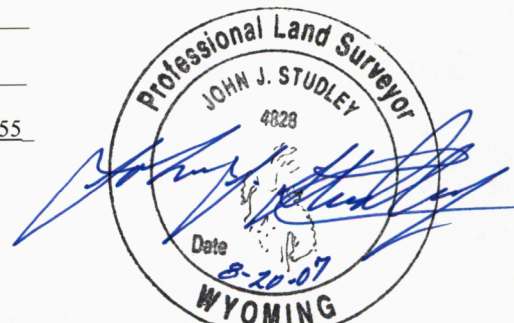
5805 E. 13th St.

Cheyenne, WY 82001

Telephone: 307-287-4755

This corner record was prepared by me or under my direction and supervision.

SEAL & SIGNATURE



RECORDED 8/21/2007 AT 8:35 AM REC# 482028 BK# 2022 PG# 5
 DEBRA K. LATHROP, CLERK OF LARAMIE COUNTY, WY PAGE 1 OF 1

Corner Name: Quarter Corner common to Sections: 22 & 27
 SBRPEPLS/PLSW: March 1994; PLSW January 1998

T 16 N R 66 W ; 6th P.M. Cross-Index No.: R15